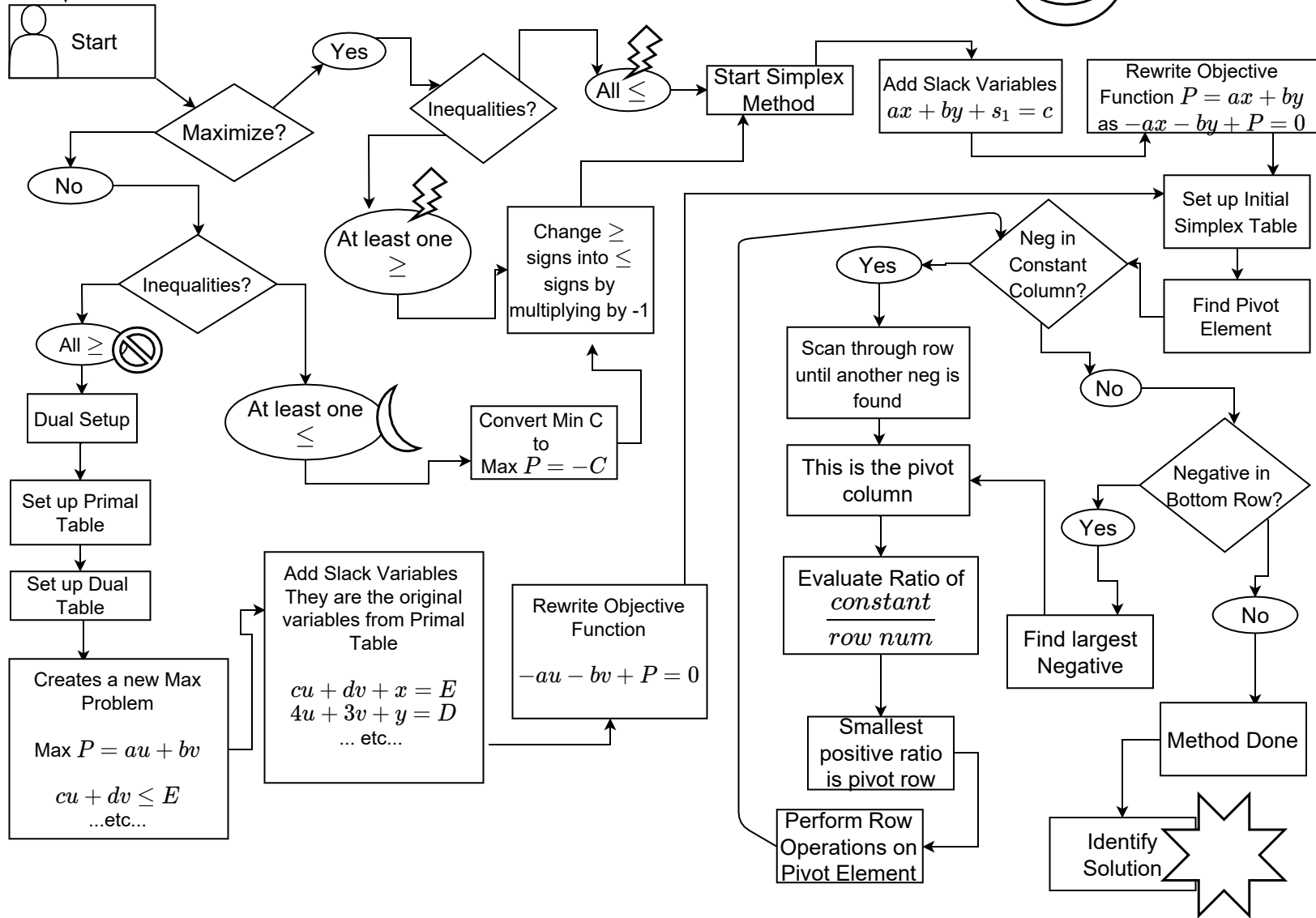
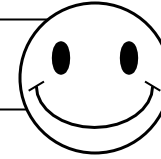
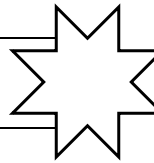
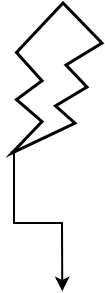


# The Simplex Method

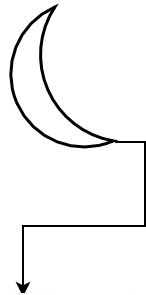



Final Simplex Tables




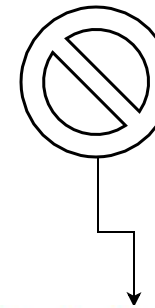
$x$	$y$	$z$	$S_1$	...	$P$	$Const$	
1	0	-2			0	$A$	
0	0	3			0	$B$	
0	1	1			0	$M$	
No Negatives Here						1	$N$

$$\begin{aligned}
 x &= A \\
 y &= M \\
 z &= 0 \text{ "Junk"} \\
 P &= N
 \end{aligned}$$



$x$	$y$	$z$	$S_1$	...	$P$	$Const$	
1	0	-2			0	$A$	
0	0	3			0	$B$	
0	1	1			0	$M$	
No Negatives Here						1	$N$

$$\begin{aligned}
 x &= A \\
 y &= M \\
 z &= 0 \text{ "Junk"} \\
 C &= -N
 \end{aligned}$$



$u$	$v$	$x$	$y$	$z$	$P$	$Const$				
Doesn't Matter						$A$				
						$B$				
						$M$				
No Negatives						6	2	3	1	$N$

$$\begin{aligned}
 x &= 6 \\
 y &= 2 \\
 z &= 3 \\
 C &= N
 \end{aligned}$$